

**General**

Provide MYSON **CV** or **RCV** steel panel radiators in models and sizes including accessories as scheduled. **CV** and **RCV** RADIATORS are made of 18 gauge cold-rolled sheet steel, and in accordance with EN 442-1, with a stylish and robust fluting, with ribs at 1<sup>5</sup>/<sub>16</sub> inch intervals.

**RCV** style radiators have an added flat front panel with slight horizontal ribbing at 2.6 inch intervals for architectural appeal.

The radiators are equipped with a removable top grille and two removable closed side panels. Each radiator is supplied with E-Z fit wall mounting brackets, (there are no wall mounting lugs welded onto the back). A manual vent plug, two blind plugs and a pre-installed thermostatic valve insert (M30 x 1.5 thread with manual cap) are included with each radiator. Optional pedestal mounting stands are available.

The **CV** and **RCV** Series radiators are an advanced design giving high efficiency characteristics. The high outputs per unit surface area for the radiator models have been achieved by ensuring excellent contact between the convector plates and both the water channels and dividing metal of the radiator panels - see figure 1. The convector surface is spot-welded to the metal channels, but also firmly locates into grooves on the water channels, thus ensuring high heat transfer rates.

**Standard Connections:**

6 x internal thread G 1/2" BSP, 2 on each side and 2 on the bottom right (2" cc) or left (**CV** only is reversible) for supply and return.

**Maximum positive operating pressure: 145 psi**

**Maximum operating temperature: 230° F**

**CV / RCV Type 21 Depth: 2<sup>3</sup>/<sub>4</sub> inches**

double panel & one row of convector plates plus side panels & top grille

**CV / RCV Type 22 Depth: 4 inches**

double panel & two rows of convector plates plus side panels & top grille

**Standard Height:**

7<sup>7</sup>/<sub>8</sub> inches (Nominal)

**14 Standard Lengths:**

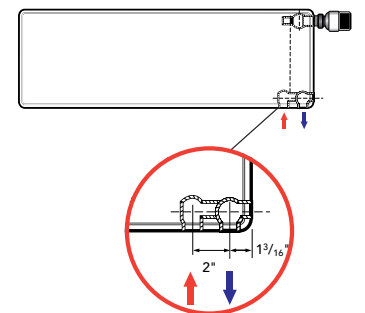
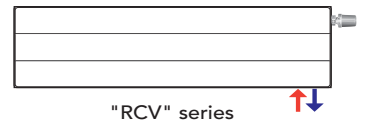
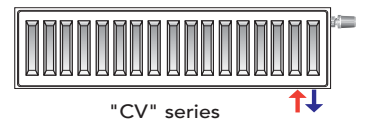
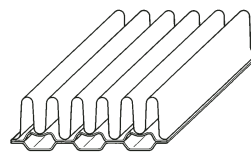
24 to 119 inches (Nominal)

- Additional depths are available as special order

**Finishes:**

1. **Undercoat:** cataphoretic, submersion in a KTL bath, conforming to DIN 55900 part 1, baked at 347° F;
2. **Finish coat:** electrostatic powder coating, conforming to DIN 55900 part 2, baked at 374° F. (On request, and at a supplementary charge, a range of RAL colors can be offered. RAL 9016 white is standard.)

figure 1



**Warranty:**

MYSON radiators are covered by a 10 year warranty.

A variety of adapters, valves, and TRV actuators is available and recommended from **MYSON**. For specific applications see our valve literature. Pipe covers and escutcheons are available.

**Quality certificates**



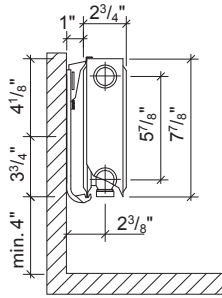
PROJECT NAME:  
ARCHITECT:  
ENGINEER:  
SUBMITTED DATE:

APPROVED DATE:

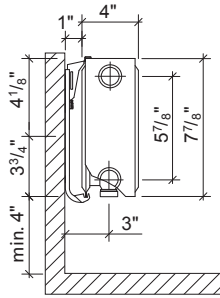
APPROVED

CV and RCV Type 21 and Type 22 models

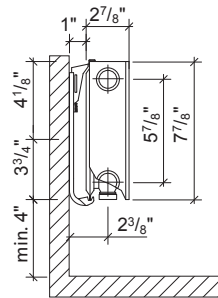
CV Baseboard and RCV Baseboard - wall brackets



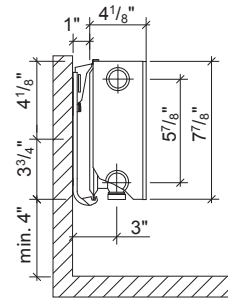
type CV 21



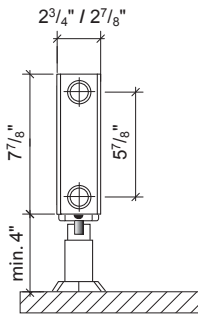
type CV 22



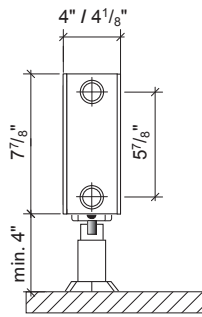
type RCV 21



type RCV 22



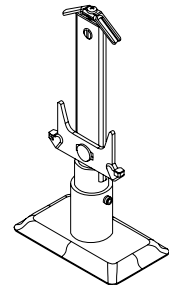
type CV 21  
type RCV 21



type CV 22  
type RCV 22



Wall Bracket



Pedestal Stand

Number of wall or pedestal brackets per radiator length

- up to 1600mm: 2 brackets
- 1600 - 2400mm: 3 brackets
- over 2400mm: 4 brackets

CV Baseboard and RCV Baseboard - pedestal

	Order Code	Nominal Length	Output*	Output*	Output*	Weight	Water Content	Order Code	Output*	Output*	Output*	Weight	Water Content
	CV/RCV Type 21	(mm - inches)	Btuh @ 180°F AWT	Btuh @ 160°F AWT	Btuh @ 140°F AWT			CV/RCV Type 22	Btuh @ 180°F AWT	Btuh @ 160°F AWT	Btuh @ 140°F AWT		
Height 200mm - 7 7/8 in	CV21/RCV21-600	600 - 23 5/8	1346	1063	781	14.3/18.0	0.39	CV22/RCV22-600	1776	1403	1030	16.7/20.5	0.39
	CV21/RCV21-700	700 - 28 3/8	1573	1243	912	17.2/21.6	0.47	CV22/RCV22-700	2075	1639	1204	20.0/24.6	0.47
	CV21/RCV21-800	800 - 31 1/2	1796	1419	1042	19.1/24.0	0.52	CV22/RCV22-800	2370	1873	1375	22.3/27.4	0.52
	CV21/RCV21-900	900 - 36 1/4	2022	1597	1173	21.9/27.6	0.60	CV22/RCV22-900	2668	2108	1547	25.6/31.5	0.60
	CV21/RCV21-1000	1000 - 39 3/8	2248	1776	1304	23.8/30.0	0.66	CV22/RCV22-1000	2964	2342	1719	27.8/24.2	0.66
	CV21/RCV21-1100	1100 - 43 5/16	2472	1953	1434	26.2/33.0	0.72	CV22/RCV22-1100	3251	2568	1886	30.6/37.6	0.72
	CV21/RCV21-1200	1200 - 47 1/4	2698	2131	1565	28.6/36.0	0.79	CV22/RCV22-1200	3968	3135	2301	33.4/41.0	0.79
	CV21/RCV21-1400	1400 - 55 1/8	3147	2486	1825	33.4/42.0	0.92	CV22/RCV22-1400	4150	3279	2407	38.9/47.9	0.92
	CV21/RCV21-1600	1600 - 63	3598	2842	2087	38.1/48.0	1.05	CV22/RCV22-1600	4758	3759	2760	44.5/54.7	1.05
	CV21/RCV21-1800	1800 - 70 7/8	4046	3196	2347	42.9/54.0	1.18	CV22/RCV22-1800	5336	4215	3095	50.0/61.5	1.18
	CV21/RCV21-2000	2000 - 78 3/4	4496	3552	2608	47.6/60.0	1.31	CV22/RCV22-2000	5939	4692	3445	55.6/68.4	1.31
	CV21/RCV21-2300	2300 - 90 5/16	5172	4086	3000	54.8/69.0	1.51	CV22/RCV22-2300	6818	5386	3954	63.9/78.6	1.51
	CV21/RCV21-2600	2600 - 102 3/8	5842	4615	3388	61.9/78.0	1.71	CV22/RCV22-2600	7706	6088	4469	72.3/88.9	1.71
	CV21/RCV21-3000	3000 - 118 1/8	6742	5326	3910	76.8/90.0	1.97	CV22/RCV22-3000	8894	7026	5159	83.4/102.5	1.97

\* Outputs are based on EAT of 68°F. For outputs based on other AWT and/or other EAT please consult our radiator correction chart.

Specifications per Linear Foot

Order Code	Nominal Height (inches)	Btuh/ft at 180°F AWT**	Btuh/ft at 160°F AWT**	Btuh/ft at 140°F AWT**	Weight (lbs/ft)	Water Content (gals/ft)
CV21 - XXXX	7 7/8	684	540	397	7.26	0.20
CV22 - XXXX	7 7/8	902	713	523	9.14	0.20
RCV21 - XXXX	7 7/8	684	540	397	8.47	0.20
RCV22 - XXXX	7 7/8	902	713	523	10.41	0.20

\*\* Outputs are based on a delta T of 20°F and EAT of 68°F.

All Dimensions are nominal